
MANAGING THE TRANSITION OF AN EAP EXAMINER TRAINING PACKAGE ONLINE

Anna Ziomek & Svetlana Mazhurnaya

International Study and Language Institute
University of Reading



OUTLINE

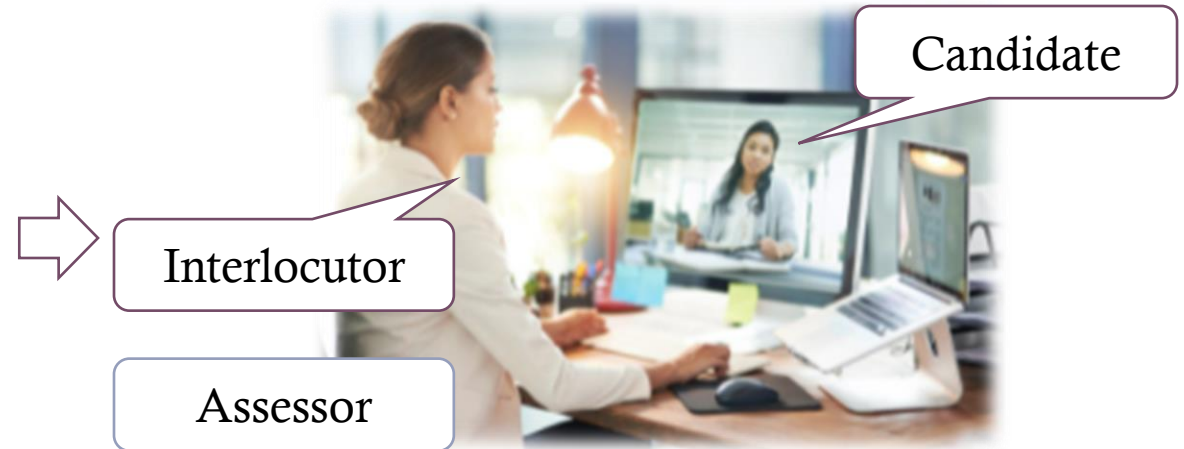
- The need for change
 - Constraints and challenges
 - Approach to managing change
 - The Online Training Package
 - Evaluation
-

CHANGES IN THE EXAM FORMAT

FACE-TO-FACE TEEP



ONLINE TEEP



A change in the testing mode



A change in the exam format



A change in the assessment criteria



A change in the standardisation mode

CHANGES IN THE EXAMINER TRAINING PROGRAMME



- Face-to-face
- Intensive
- Group

- Online?
 - Flipped?
 - Individual?
-

CONSTRAINTS & CHALLENGES

From the developers' point of view

- Existing technical software (Blackboard & Teams)
- Time available (real-time development & implementation)
- A change in test security measures

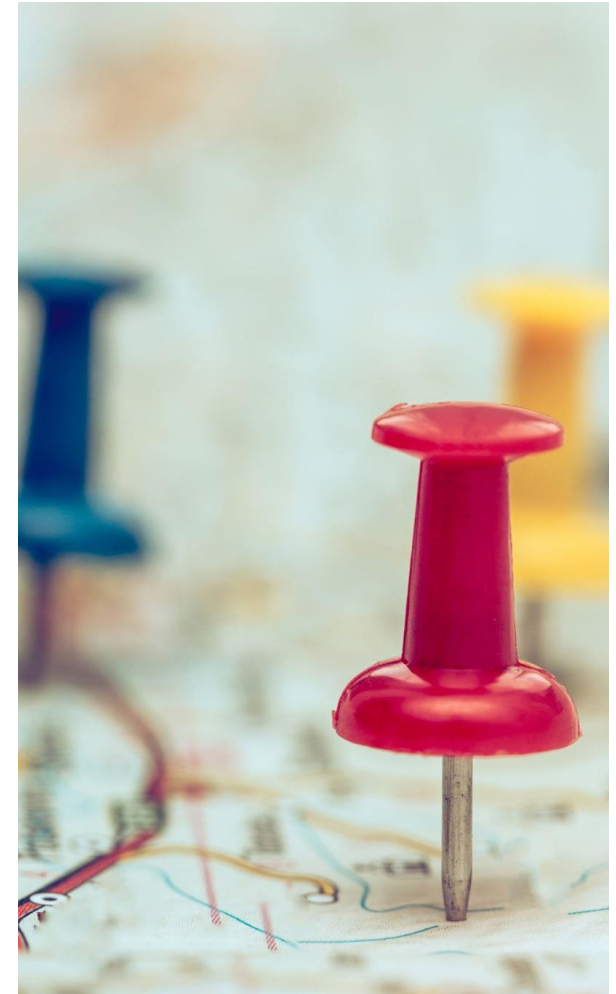
From the user's point of view

- Staff in different time zones
- Internet connection issues
- Staff technological skills
- Staff workload



OUR APPROACH TO MANAGING CHANGE

- **Content:**
 - Scoping exercise
 - Prioritisation
 - Security
- **Delivery tools:**
 - Blackboard for static content
 - Teams for interactive / shared materials e.g. Q&A channel
- **Development:**
 - Peer-review
 - Trialling of technical protocols
- **Communication:**
 - Liaising with course directors about time allocation
 - Timed content release



ISLI EXAMINER TRAINING PACKAGE ONLINE

1. Clear aims and timings for each item to manage expectations

2. Using multi-media tools:

- Embedded stream screencasts
- Xerte activities

3. Downloads for the test administration

4. Elements of interactivity:

- Peer-discussion of the benchmarked recordings
 - Q&A chat (Teams channel)
 - Live Q&A session (Teams meeting)
 - Calibration session
-

Online TEEP Speaking Examiner Training

Enabled: Review

In this part of the training course you will:

1. familiarize yourself with the online TEEP speaking test format
2. familiarize yourself with the test materials and technology
3. have an introduction to (or a refresher of) the TEEP speaking criteria and how to use them
4. be able to access some TEEP speaking test videos with grades and comments (benchmarking)
5. mark several recorded speaking performances and see the moderated grades that were given
6. have a follow-up session where we can:
 - deal with any questions about the descriptors
 - try to answer any other outstanding questions



1. Online TEEP Speaking Test Format

Enabled: Review, Statistics Tracking

- **Aim:** to familiarize yourself with the exam format
- **Time:** 10 minutes
- **Instructions:**
 - Watch the screencast and post any questions on the discussion board at the bottom of the page.
NB! you can navigate to different parts of the video if you open it in Stream: click on the arrow in the bottom right-hand corner of the screencast > click on the times in the description below the video to skip to a video section you wish to watch).
 - Contact your speaking test partner so that you can arrange a mutually convenient time to practise the mechanics of running the speaking test. Please do this before the live Q&A session with the Assessment Team 20 August (see section 8 below)
- **Materials:**
 - List of speaking test partners and screencast below (see the PowerPoint version [here](#))

[Partners for TEEP Speaking Test Practice.pdf](#)

Online TEEP Speaking Test Format

55 views · 0 likes · 0 comments

♥ +

ONLINE TEEP SPEAKING TEST

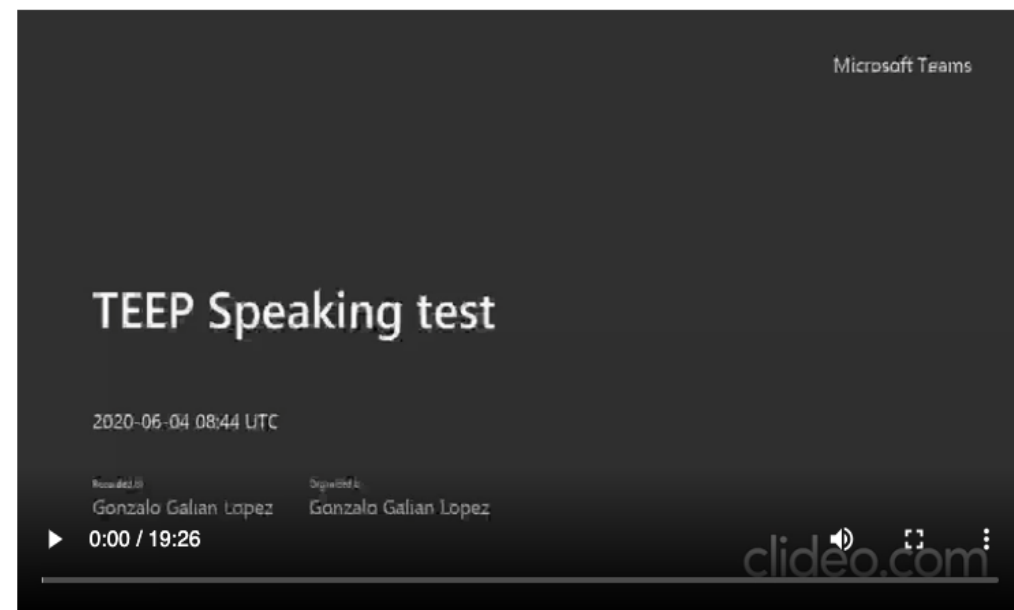


Your Guide
Test format and materials required

Copyright University of Reading

LIMITLESS POTENTIAL | LIMITLESS OPPORTUNITIES | LIMITLESS IMPACT

Watch the recording below and grade the performance using the scales.



Type grades into the fields below as numbers, including half-bands e.g. 5.5 or 7.0. Press Check when complete.

Overall communication	6.0
Fluency	6.0
Accuracy & Range	6.0
Intelligibility	6.5

The moderated grades for this performance are:

Overall Communication: 6.0

- The candidate responds effectively to straightforward questions/prompts;
- The candidate needs clarification at times but can ask for it appropriately;
- The development is relevant but somewhat limited.

Fluency: 6.0

- The candidate is reasonably fluent despite being slightly repetitious when searching for words;
- There is some natural end-clause pausing;
- The candidate is able to repair a breakdown in communication at stage 3.

Accuracy & Range: 6.0

- The range is limited but allows the relatively easy exchange of ideas; Inaccuracies occur fairly frequently but are not impeding e.g. "to invest higher education , if you interesting, inconvenient, when you are study ...".

OVERALL COMMUNICATION

Overall communication:

- Responding to questions
- Asking for clarifications
- Development of argument and description with supporting points

7.5 +	content rather than language. Develops elaborate descriptions and arguments, expands and supports main points at some length with reasons and relevant examples.
7.0	Responds to a wide range of questions/prompts in a way that goes beyond the original question. Any clarification requests are likely to relate to content or complex language. Develops a description or an argument systematically with fairly precise points, appropriate emphasis of significant points, and relevant supporting detail.
6.5	Responds effectively to most questions/prompts, including more abstract/hypothetical ones, although may need more time to do so. Can ask for clarification appropriately if necessary. Generally, develops a clear description or an argument beyond the specific question, with appropriate highlighting of significant points, and relevant supporting detail.
6.0	Responds effectively to straightforward questions/prompts but may struggle to answer more abstract or hypothetical prompts due to language limitations. May at times need clarification but can ask for it in an appropriate way. Develops a description or an argument by expanding and supporting higher points at some length with relevant examples.
5.5	Responds to clearly expressed questions/prompts but may misunderstand them at times. Can ask for clarification in simple ways. Develops some points without encouragement but may lack language resources to do so effectively. Can develop an argument well enough to be followed without difficulty most of the time.
5.0	Manages to answer straightforward questions/prompts, but often slowly and not always appropriately. May misunderstand instructions or prompts/questions or need them to be reformulated. Can ask for clarification with some difficulty. Topic development is likely to be limited or dependent on the interlocutor; efforts at explaining may be laboured or neglected.
4.5	Usually responds to straightforward questions/prompts and can give basic factual information. Will probably misunderstand instructions or prompts/questions. Interlocutor will need to adapt language and reformulate questions to maintain communication. Will need time to formulate answers.
4.0	May be able to respond to some straightforward questions/prompts and give some basic factual information. May misunderstand task requirements and will most probably be unable to ask for clarification. Limited language skills make following speech at normal speed a problem, and undue time

EVALUATION



Rater engagement

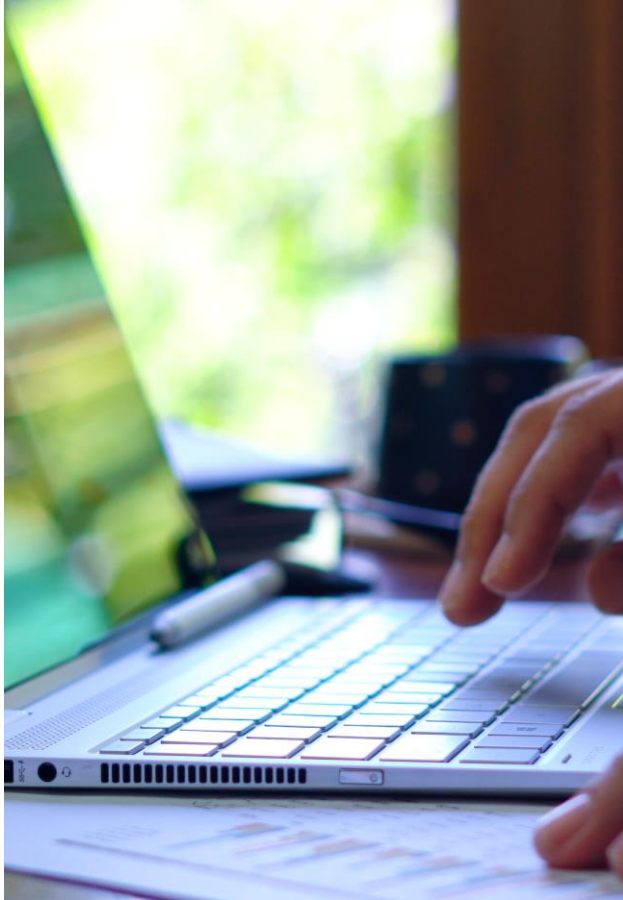


Rater feedback



Rater reliability

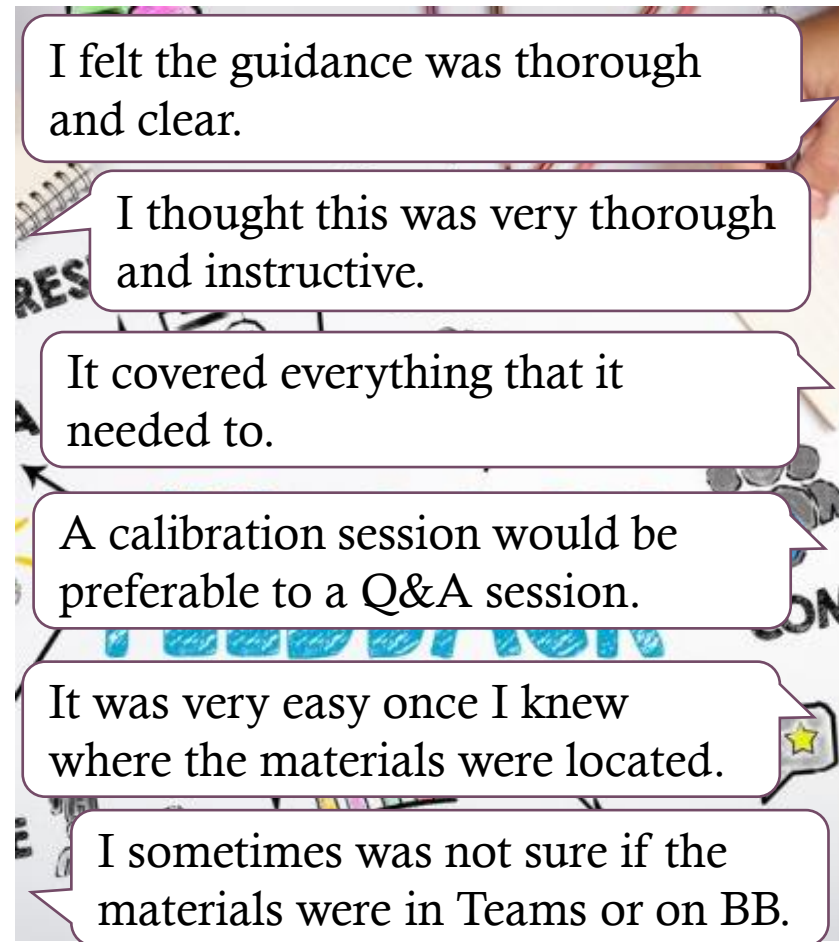
RATER ENGAGEMENT



Training area	Average time per user	Average total log ins
Speaking examiner training	3 h 40 min.	33
<ul style="list-style-type: none">• Academic content<ul style="list-style-type: none">• Online TEEP speaking test format• Examiner script and instructions• Marking approach• Benchmarking recordings• Grading practice	2 h 45 min.	24
<ul style="list-style-type: none">• Technical content<ul style="list-style-type: none">• Setting up your test meeting• Processing test videos	20 min	7

Table 1: Blackboard User Activity Report for Summer 2021

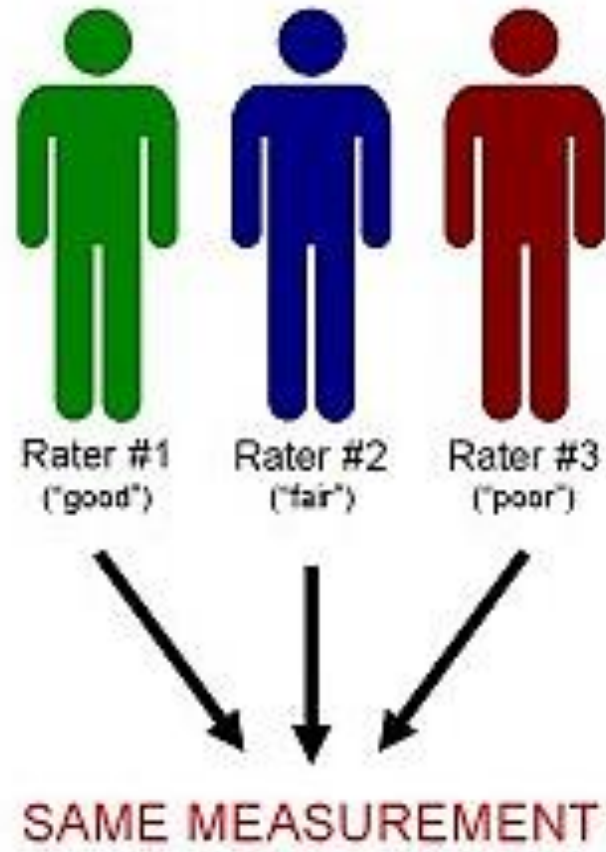
RATER FEEDBACK



How well did the online Examiner Training package prepare you for:	Very well	Quite well	Not very well
• administering the TEEP Speaking test online?	94.7%	5.3%	0%
• grading the TEEP Speaking tests?	78.9%	21.1%	0%
How easy was it for you to ...	Very easy	Quite easy	Not very easy
• Locate the materials that you needed for the TEEP?	68.4%	31.6%	0%

Table 2: PSE Tutor Feedback Report for Summer 2021

RATER RELIABILITY



• Measure	Value	Significance
The overall speaking test reliability	$\alpha = .946$.000
Inter-rater reliability (ICC) (n =31)		
• Average Measures	.828c	.000
• Single Measures	.707a	.000

Table 3: Speaking Rater Reliability Report for Summer 2021

OUR REFLECTIONS

- More flexible
- More transparent
- Still needs a strong element of calibration
- Suitable for face-to-face exam training



THANK YOU FOR LISTENING

- Please get in touch with us if you have any questions or would like to discuss this topic further
 - Anna Ziomek
a.k.ziomek@reading.ac.uk
 - Svetlana Mazhurnaya
s.mazhurnaya@reading.ac.uk
-

